

BodyMap® R & R Plus



BodyMap R – the sensory bean bag floor cushion

The Bean Bag chair is a sensory floor cushion created for disabled children. It is filled with micro beads that maintain body shape and improve neuromotor functions. The cushion can be shaped to the individual thus giving excellent support for play, learning or relaxing.

The Bean Bag is made from elastic, skin friendly neoprene and covered with damage resistant anti-migrated fabric. It can also be made from anti-slip base.

RMS
Working with
BodyMap®



BodyMap R Plus

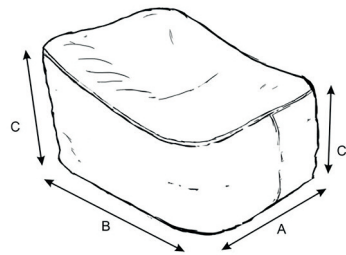


BodyMap R

BodyMap R Dimensions

Size	Dimensions (cm)				Available Colour	Part No.
	Cushion Width (A)	Cushion Length (B)	Total Height Of Cushion (C)	Cushion Height (C1)		
1	45	65	40	30	●	BODY-BM-R1
2	60	80	50	40	●	BODY-BM-R2
3	70	100	70	50	●	BODY-BM-R3

BodyMap®R

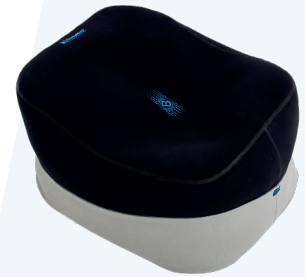
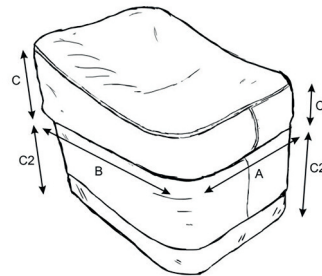


A - Cushion width, B - Cushion Length,
C - Total height of the cushion, C1 - Cushion height

BodyMap R Plus Dimensions

Size	Dimensions (cm)						Available Colour	Part No.
	Cushion Width (A)	Cushion Length (B)	Total Height Of Cushion (C)	Cushion Height (C1)	Foam Height (C2)			
1	45	65	25	15	25	●	BODY-BM-R1+	
2	60	80	30	20	30	●	BODY-BM-R2+	
3	70	100	40	20	40	●	BODY-BM-R3+	

BodyMap®R Plus



A - Cushion width, B - Cushion Length,
C - Total height of the cushion, C1 - Cushion height, C2 - Foam height

Pump

Pump Option

Manual pump supplied as standard



Optional Upgrade

Electric dual function pump

